



TOYOTA HILUX N80 2015 ON ROCK SLIDERS

IMPORTANT! – READ BEFORE INSTALLATION

- This product must be installed exactly as per these instructions using only hardware supplied.
- Take a few moments to read instructions thoroughly before beginning work.
- In the event of damage to any bar component please contact OFFROAD ANIMAL to arrange repair/replacement of components.
- Do not use this product for any vehicle make or model other than that specified on these instructions.
- Do not remove labels from this product.
- This product and its fixings must not be modified in any way unless stated in these fitting instructions.
- The installation of this product is recommended for trained personnel.
- These instructions are correct at time of publication. OFFROAD ANIMAL cannot be held responsible for the impact of any changes subsequently made by the vehicle manufacturer. If you find something has changed please contact us to let us know!
- During installation it is the duty of the installer to check correct operation/clearances of all components.
- If Instructions are to be printed for reference in the workshop, it is recommended that they are printed in colour, for best legibility.
- Fitting time estimated 1-2 hours

GENERAL CARE AND MAINTENANCE

Only wash the product with a PH neutral car wash to prevent paint damage and discolouration.

Plastic parts may be maintained with silicone spray.

Do not use acidic or alkaline based cleaning products.

It is important to perform regular checks (pre trip or on an annual basis) on the installed product. Checks include:

- Visual inspection for damage (eg. cracks, chips, dents etc.)
- Electrical wiring is not rubbing anything or worn out
- Bolts are torqued to correct specification (see torque guide below)

For touching up small stone chips, Offroad Animal recommends the following paint products:

- Dupli-Color Trim & Bumper Paint Black (TB101)
- VHT Hood, Bumper & Trim Paint Black (SP27)

BOLT TORQUE SETTINGS

Use the following bolt torques on all general fasteners, unless otherwise specified.

GENERAL FASTENERS	
Size	Torque Nm
M5	5 Nm
M6	9 Nm
M8	22 Nm
M10	44 Nm
M12	77 Nm

Use the following bolt torques on all structural front bar mount and tow point fasteners, and rear towbar fasteners, unless otherwise specified.

FRONT BAR MOUNTS AND TOW POINTS + REAR TOWBAR	
Size	Torque Nm
M10	57 Nm
M12	100 Nm
M14	164 Nm
M16	248 Nm

Always use a torque wrench to set correct torque settings. Ensure torque wrench is set to Nm unit of measurement. Otherwise perform conversion to lb-ft.

PARTS LISTING

IMPORTANT: Check all parts are present before beginning work! Contact OFFROAD ANIMAL if something is missing.

Main Parts – In the Box

Qty	Part Number	Description	Image
2	E-0002-1800	Slider extrusion - 1800MM	
2	B-0207	Slider Step – Suit 1800 Extrusion	
2	RS-THL-N80-15-ASM2	Hilux Slider Front Crossmember Mount Assy	
2	RS-THL-N80-15-ASM5	Hilux N80 Mid Mount	
1	RS-THL-N80-15-ASM6L	Hilux N80 Slider Rear Mount Assy	
1	RS-THL-N80-15-ASM6R	Hilux N80 Slider Rear Mount Assy	

2	P-0054	Mid Mount Backing Plate - Hilux N80 Slider	
4	P-0107	Front Mount Spacer Plate	
2	COM-RS-EC	Slider End Cap	
2	COM-RS-ECM	Slider End Cap	

Small Parts – Contained in Small Parts Kit Bag

Qty	Part Number	Description
30	M8 NUT	Hex Nut, M8x1.25 G8.8 ZP
14	M8X20 CAP SCREW	CAP SCREW, M8X20X1.25 GR10.9 ZP
34	M8 FLAT WASHER- BLACK ZINC	M8 FW- BLACK ZINC
20	M8 X 20 BHCS BLACK ZINC	SCREW, BUTTON HEAD CAP, M8X20X1.25 BLACK ZP
32	M10 x 25	Bolt Hex, M10X25x[1.5], GR8.8 ZP
32	M10 FLANGE NUT	Flange Nut, M10x1.5 G8.8 ZP
8	M12 FLANGE NUT	Flange Nut, M12x1.75 G8.8 ZP
8	M12X130 GR10.9	Bolt Hex, M12X130x1.75, GR10.9 ZP
10	M12 FLAT WASHER	M12 FW
2	OFA-LOGO	OFFROAD ANIMAL METAL LOGO
2	COM-RS-ECM	Slider End Cap
1	FI Note	Fitting Instruction Note
1	CC-1900-400-300	CARDBOARD CARTON 1900X400X300
1	SPK-BAG	BAG, PLASTIC HEAT SELAED - SUIT SMALL PARTS KIT
2	E-0002-1800	Slider extrusion - 1800MM
2	NP-COM-M12-300-ASM0	M12 NUT PLATE 300MM STEM
2	M12X30	Bolt Hex, M12X30x1.75, GR8.8 ZP
2	M8 FLAT WASHER	M8 FW
2	M8 X 30 HEX	Bolt Hex, M8X30X1.25, GR8.8 ZP

TOOLS REQUIRED

The following tools will be required to install the product.

Hand Tools	Power Tools	Workshop Equipment
Metric Socket Set 8-19mm Socket Extension Bar Metric Spanner Set 10-19mm Hex (Allen) Key Set 4-6mm Flat Blade Screwdriver set Phillips Head Screwdriver set Utility Knife Side Cutters Pliers	Electric/Air Impact Driver (Optional)	Hydraulic Floor Jack

WORKSHOP SAFETY

It is the responsibility of the installer to always complete works in a safe manner. Make sure the following safety equipment is available and precautions are observed whilst fitting this product.

<p>Hearing Protection</p> 	<p>Always wear ear protection when using power tools.</p>
<p>Eye Protection</p> 	<p>Ensure eye protection is always worn when cutting or drilling.</p>
<p>Manual Handling</p> 	<p>Do not attempt to lift bar assemblies or rock sliders on your own.</p> <p>Always use two people to lift or use mechanical Lifting aid such as hydraulic lifting trolley.</p>
<p>Vehicle Support</p> 	<p>Always ensure vehicle is properly supported when working on it. Do not attempt to fit products whilst suspension work is being carried out. Do not work under a vehicle supported only by a jack.</p>



1. Remove Factory side steps if fitted by removing the 6x Bolts (2 Per mount) securing them to the body using a 12mm socket.
2. Discard Factory steps and bolts.

TOOLS REQUIRED

12mm socket

FASTENERS6x Factory Flange head Bolts
(per side)



3. Using a hydraulic jack, support the gearbox cross member. Place enough pressure on the cross member that the body of vehicle lifts just slightly.
4. Remove and discard the Factory M12 Bolts securing the gearbox cross member.
5. Fit the front cross member mount over the cross member, with P-0107 spacer plates taking up the gap between the cross member and bracket, as per the inset image.

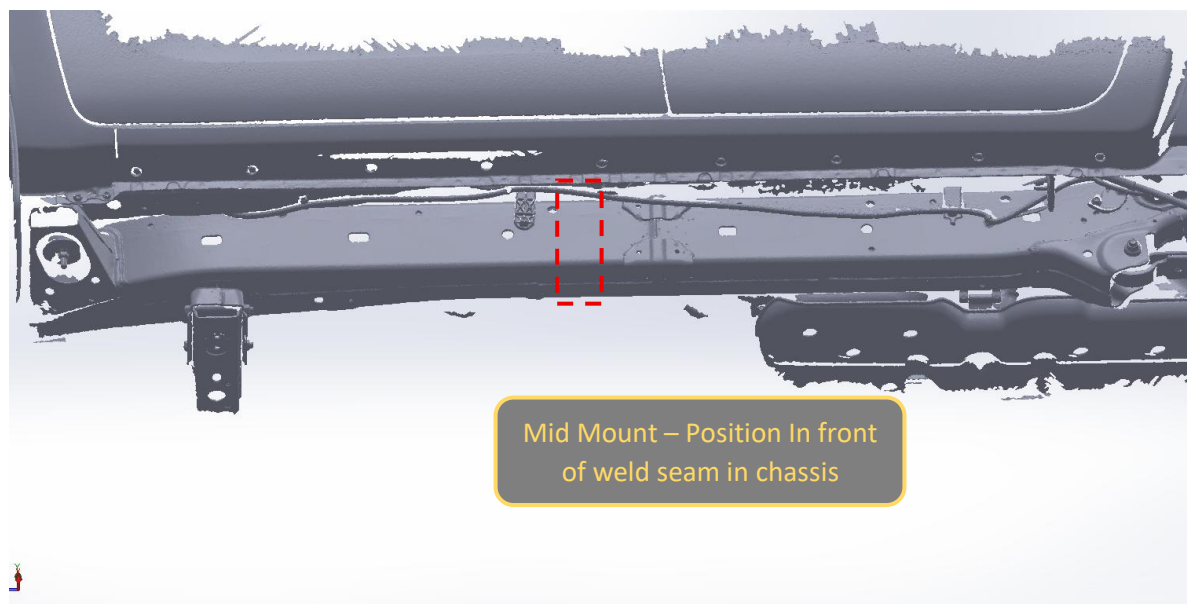
Secure with supplied M12x130 bolts, Flat washers and Flange nuts.
6. Ensure the cross member mount is sitting flush with the cross member. Once positioned, tighten M12 Bolts.
7. Once bolts are tight jack can be released.

TOOLS REQUIRED

Jack
18mm socket / Spanner

FASTENERS

M12x130 Bolt
M12 Flat washer
M12 Flange Nut



8. Locate and mark the mid mount positions on chassis, as shown in above image.

TOOLS REQUIRED

Marker

FASTENERS



9. Prepare mid mounts by pre-inserting the M12x130 Bolt, with flat washer, part way through the top mounting hole.
10. Lift mid mount up to chassis rail and position against chassis in position marked. Ensure that the bolt, inserted earlier goes over the top of the chassis rail.

TOOLS REQUIRED**FASTENERS**

M12x130 Bolt
M12 Flat Washer



11. Install the mid mount backing plate, by sliding up against back side of chassis and secure through top bolt from mount.
12. This may require manipulation of the top bolt.
13. Ensure that the plate is beneath any fuel / brake lines and sitting directly against the chassis. Secure with M12 Flange Nut, finger tight only at this stage.
14. Insert the lower M12x130Bolt and M12 flat washer through both the mount and backing plate

Secure with M12 Flange nut, Finger tight only at this stage.

TOOLS REQUIRED**FASTENERS**

M12 Flange Nut
M12x130 Bolt
M12 flat washer
M12 Flange Nut



15. Remove factory M8 bolt securing handbrake cable bracket at rear of chassis above spring hanger. Discard Factory Bolt.
16. Fit Rear bracket to chassis thread, using supplied M8x30 Bolt and flat washer. Ensure that the hand brake bracket is re attached, it should sit on top of the Rock slider bracket.
17. Fit the bottom M12x30 bolt using supplied M12 nut plate held in position behind hole in chassis.
18. Leave bolts finger tight at this stage

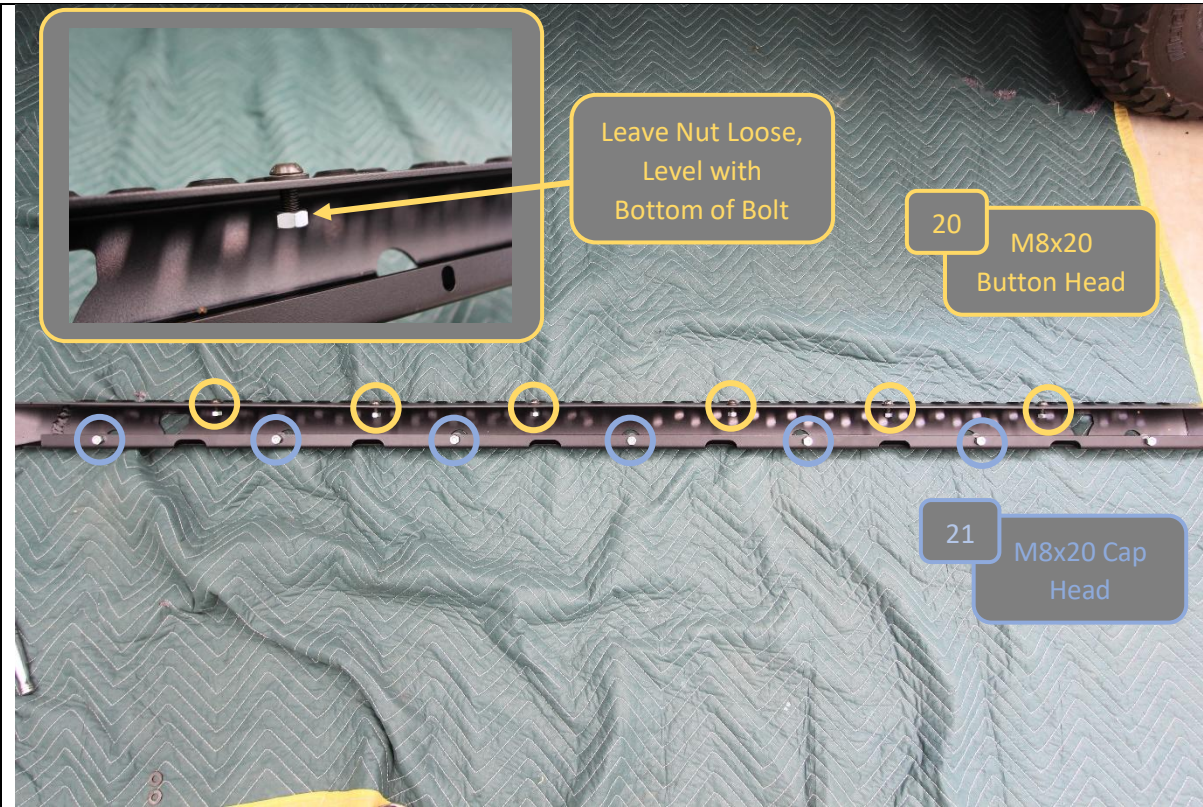
TOOLS REQUIRED

12mm Spanner / Socket
13mm Spanner / Socket

FASTENERS

M12x30 Bolt
M12 flat washer
M12 Nut Plate

M8x30 Bolt
M8 Flat Washer



<p>19. Prepare step plate by loosely pre fitting the fasteners to the step</p> <p>20. Use M8x20 black button head screws, black M8 washers and M8 Nuts on 6x locations on top of step as shown</p> <p>21. Use M8x20 cap head screws M8 washers and M8 nuts on 7x locations on bottom side of step.</p>	<p>TOOLS REQUIRED</p>
<p>NOTE THERE ARE 2 WAYS TO FIT THE STEP ON THE EXTRUSION, IF YOU FIND THIS WAY DIFFICULT SKIP STEP 19-23 AND GO TO STEP 24-29</p>	<p>FASTENERS</p> <p>6x M8x20 Black Button Head</p> <p>7xM8x20 Cap Head</p> <p>13x M8 Black Washer</p> <p>13x M8 Nut</p>



<p>22. Slide the step plate onto the main slider structural extrusion. Align the nuts as they enter the T Slots on the extrusion.</p> <p>23. Center the Step on the extrusion, by measuring distance from extrusion to tip of step, and adjusting until both sides are equal.</p>	TOOLS REQUIRED
	FASTENERS



24. Lie extrusion down and place step on top.

25. Feed nut into slot with something long and skinny (like a dowl or piece of all thread). Do centre ones first the move outwards

TOOLS REQUIRED

Long dowel or skinny stick

FASTENERS



26. Thread cap screws into each hole

TOOLS REQUIRED

6mm Allen Key

FASTENERS

M8 x 20 Cap screws (7)
M8 hex nuts (7)
M8 flat washers (7)



<div>27. Flip entire slider up as shown</div> <div>28. Clamp step hard to extrusion</div>	TOOLS REQUIRED Clamps
	FASTENERS



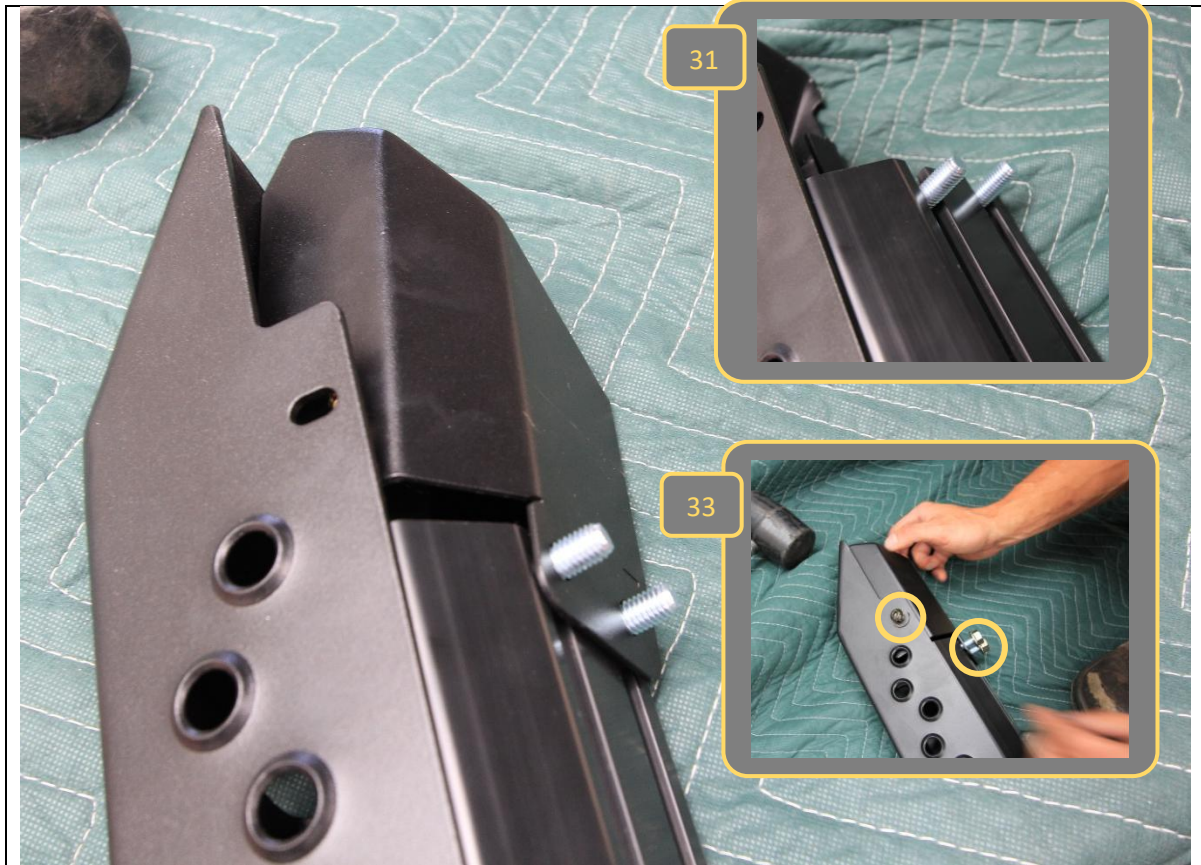
29. Using long tool feed nuts in to centre first and thread in with black M8 button head cap screws and washers

TOOLS REQUIRED

5mm Allen key

FASTENERS

M8 x 20 BHCS black (8)
M8 hex nuts (8)
M8 flat washer black (8)




30. Fit end cap to one end of the extrusion.
31. First slide 2x M10x25 Hex bolts into the T slots on back side of extrusion.
32. Fit end cap over these bolts.
33. Secure with M10 flange nuts on T slot bolts and M8x20 bolt in top, through tread plate. End cap should align with end of tread plate if tread plate is centered correctly.

TOOLS REQUIRED**FASTENERS**

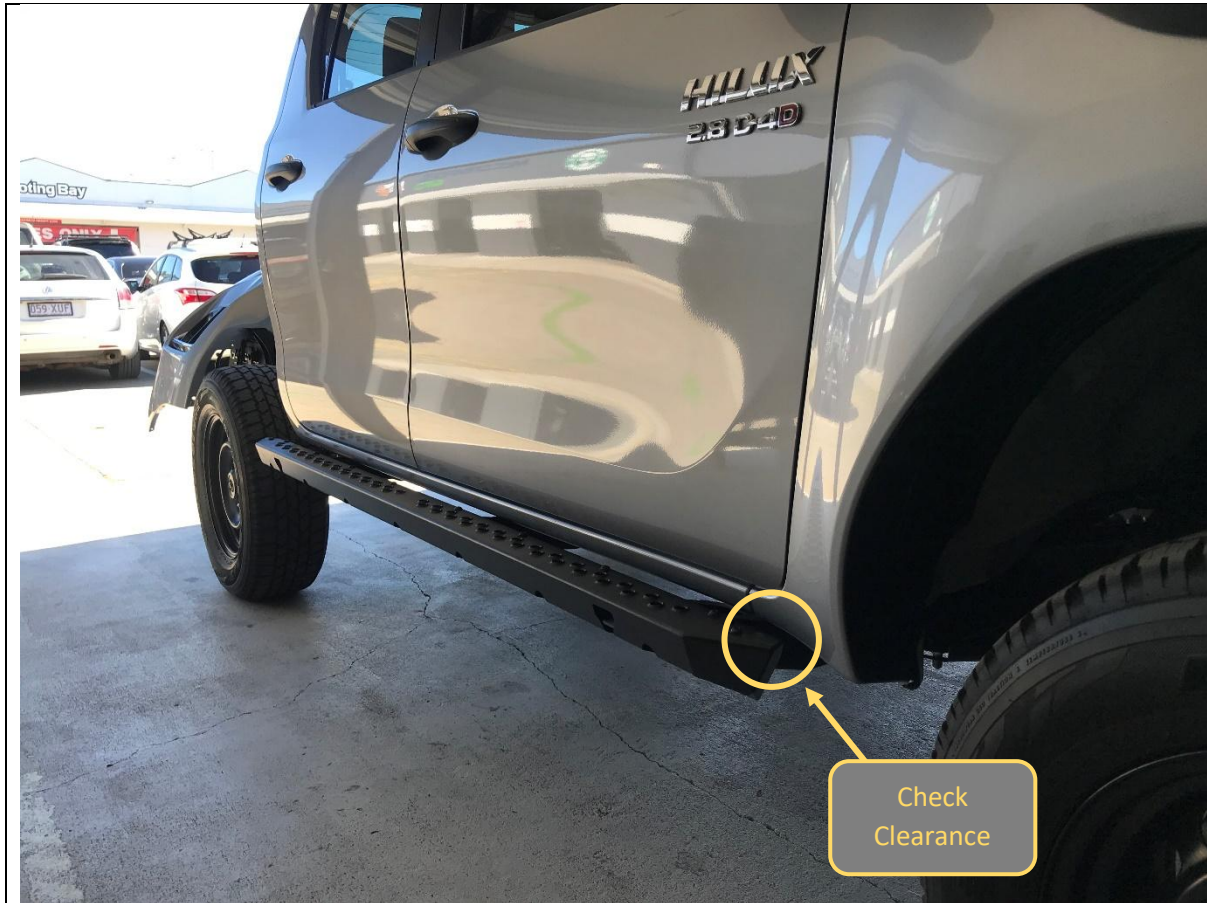
2x M10x25 Bolts
1x M8x20 Button Head
bolt
1xM8 Flat Washer
2x M10 Flange Nut



<p>34. Slide the 12x M10x25 Hex bolts into the T slots on back side of extrusion. 6 bolts per slot.</p> <p>35. Loosely arrange the bolts in 3x groups of 4, in approximate location of mounts, as shown.</p>	TOOLS REQUIRED
	FASTENERS



<p>36. Fit mirrored end cap to remaining end of slider, using 2x M10x25 hex bolts and M8x20 Button head bolt with flat washer as per previous steps 31-33.</p> <p>37. Check alignment of end caps, End cap should align with edge of tread plate if properly centered. Adjust end cap / tread plate position as required.</p> <p>38. Once happy with alignment tighten all bolts on slider extrusion, using 5/6mm hex key and 15mm spanner.</p>	TOOLS REQUIRED 5mm Hex key 6mm Hex key 15mm spanner
	FASTENERS 2x M10x25 Bolts 1x M8x20 Button Head bolt 1xM8 Flat Washer 2x M10 Flange Nut



39. With Assistance from another person, or mechanical lifting aid such as a lift trolley, Lift the slider onto the mounts.
40. Manipulation of position of bolts in T slot to align with mounts will be required to get slider on. Secure with M10 Flange Nuts
41. Adjust fore / aft position of sliders on mounts to achieve even appearance if required.
42. Take care to ensure adequate clearance where panel curves toward wheel at front end, near end cap.

TOOLS REQUIRED

5mm Hex key
6mm Hex key
15mm spanner

FASTENERS

12x M10 Flange Nut



43. Once satisfied with alignment, tighten all bolts, starting with chassis mounts.
44. Double check mount positions against initial marks made at beginning. Adjust position as required.
45. Tighten mid mount bolts using 18mm Socket / Spanner. Ensure that mid mounts are tightened evenly, by alternating a few turns on top then bottom bolt when tightening.
46. Tighten rear mount bolts using 13 & 18mm Socket / Spanner.


TOOLS REQUIRED

18mm Socket / Spanner
13mm Socket / Spanner

FASTENERS



47. Tighten all mount to slider M10 flange nuts using 15mm spanner. A ratcheting spanner makes this process easier.	TOOLS REQUIRED 15mm Socket / Spanner
	FASTENERS

	
<p>48. Fit the Offroad Animal logo plate to the small gap between pierced features on tread plate, using the pre applied double sided adhesive.</p> <p>49. Repeat the entire process for the other side of the vehicle. Process is identical.</p> <p>50. After that you are done!</p>	TOOLS REQUIRED
	FASTENERS



Congratulations!
Head for the tracks and enjoy your newly protected Hilux!